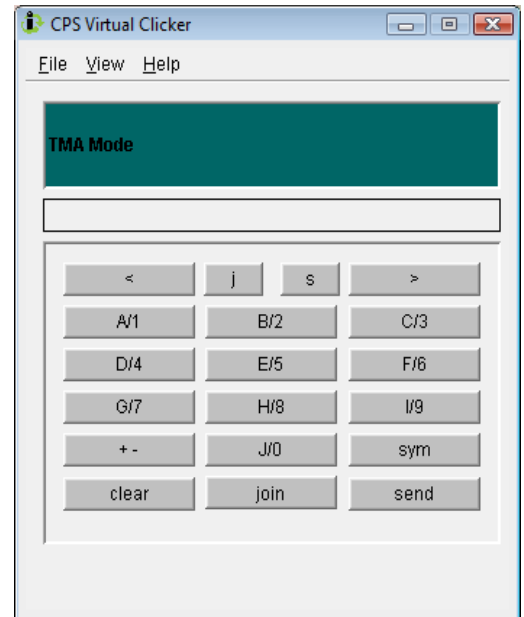




## CPS eInstruction™ vClicker User's Guide

CPS vClicker (Virtual Clicker) is a software application that mimics the look and functionality of the CPS Clicker (Response Pad.) With vClicker installed on a computer, you can participate in a Session just as you would if you were using a CPS hardware Clicker, answering questions and turning in homework assignments. vClicker that resembles the CPS Clicker and works in the same way. You type in your answer on the computer keyboard, it displays on the vClicker LCD screen, and you hit the Enter key to send your answer to the CPS Response software on the host computer, or use your mouse on the buttons.

The vClicker application can be installed from a CD, or it can be downloaded from the eInstruction Web site at [www.einstruction.com/downloads](http://www.einstruction.com/downloads). Both installations are described below. vClicker must be installed on a computer running Windows XP or Vista, Mac OS X 10.3 and above.



**NOTE:** To run CPS vClicker, users of Mac Jaguar (10.2) you will need to download the free version of Java 14.2 available for 10.2.6 and above.

Once it is installed on your computer, vClicker must be activated by entering a set of activation codes before it can be used to participate in a Class. Software installation and activation are one-time-only operations performed for each installation of vClicker.

When you are ready to participate in a Session, you will *connect* to the Class by entering the Host IP Address that is displayed on the yellow Status Bar at the bottom of the Session window. This will display when your instructor has enabled the Virtual Receiver. Once you are connected, you will be able to answer questions or submit homework assignments. This User's Guide describes the installation and setup of vClicker, how to use vClicker to send responses – during both regular Sessions and Self-Paced Sessions – and how to turn in homework assignments, as well as additional vClicker menu options and preferences settings.

# Installing CPS vClicker from a CD

## Windows

**NOTE:** vClicker must be installed on Windows by an Administrator.

1. Log in as Administrator.
2. Insert the vClicker CD in the CD-ROM drive. The vClicker Installer will auto run. If it doesn't, click on the Start button on the Windows Task Bar and select Run from the menu. Click on the Browse button. Navigate to the CD-ROM drive and double-click on autorun.exe.
3. Click on the Install CPS vClicker Software menu option.
4. Follow the onscreen instructions for the software installation.

## Mac

**NOTE:** vClicker must be installed on the Mac by an Admin.

1. Log in as Admin.
2. Insert the vClicker CD in the computer's CD-ROM drive. When it appears on your Desktop, double-click on the CD icon.
3. Double-click on the Install CPS vClicker icon.
4. Follow the onscreen instructions for the software installation.

# Installing Downloaded CPS vClicker Software

Download the vClicker software from [www.einstruction.com/downloads](http://www.einstruction.com/downloads) to a location on the computer you will be using during Response Sessions.

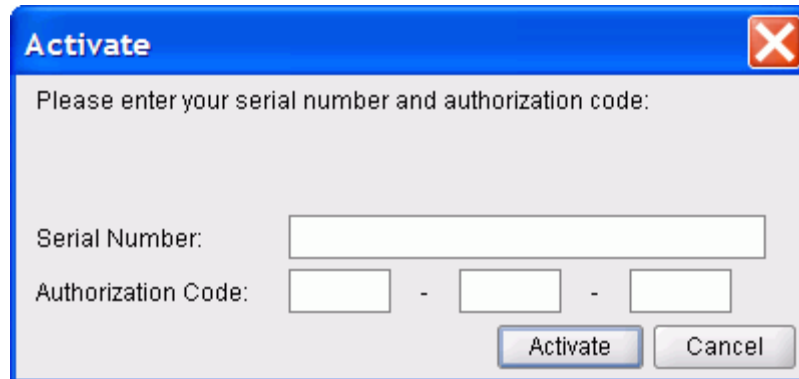
## **Windows or Mac**

1. Navigate to the location of the downloaded vClicker application.
2. Double-click on the vClicker application icon.
3. Follow the onscreen instructions.

# Setting Up Installed CPS vClicker Software

You must activate vClicker after the software has been installed on the computer.

1. Have your activation codes handy and start up Virtual
2. Clicker.
3. The Activate screen will normally pop up automatically if you have not yet activated the software. If you need to activate from the vClicker File menu, select the Activate menu option.
4. Enter the Serial Number and Authorization codes in their respective fields.
5. Click on the Activate button.



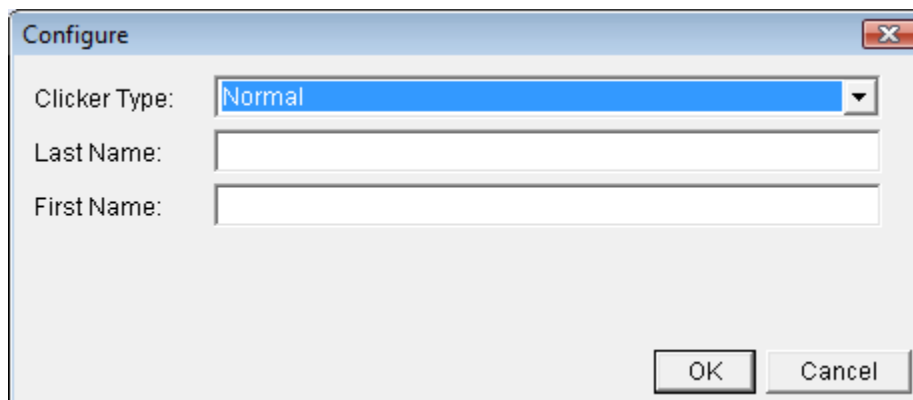
**Activate**

Please enter your serial number and authorization code:

Serial Number:

Authorization Code:  -  -

**NOTE:** CPS vClicker is set to the Normal Clicker type by default. To check this, click on the **File** menu and then choose **Configure Clicker**. If you have not changed it, you should see **Normal** as the Clicker Type.



**Configure**

Clicker Type:

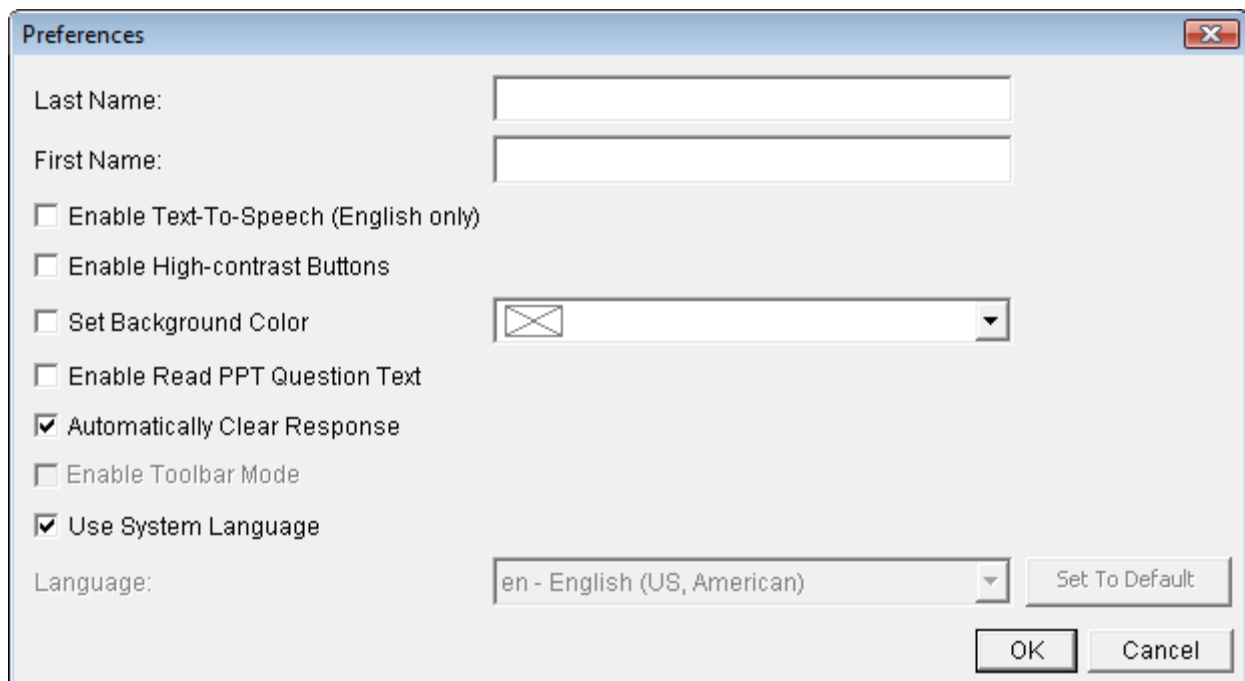
Last Name:

First Name:

# Setting up Preferences

**Automatically Clear Response** The *Automatically Clear Response* option is selected by default. On a handheld Clicker, the answer remains on the LCD display after it has been sent, and the message *Received* is displayed on the line below it. A student's computer screen may be visible to those close by, so in a typical vClicker classroom, it is probably reasonable to keep this option selected so the student's answer will not remain on the screen after it has been sent.

**Language** By default, the *Use System Language* option is selected. vClicker will display in the language established for the system, if it is one of the supported languages. Otherwise, it will display in English. If you want to choose a display language from the list, click on the checkbox to clear it and scroll to your preferred language. Click on the **Set to Default** button to reset the default language settings.



The screenshot shows a 'Preferences' dialog box with the following settings:

- Last Name: [Empty text box]
- First Name: [Empty text box]
- Enable Text-To-Speech (English only)
- Enable High-contrast Buttons
- Set Background Color [Color selection box]
- Enable Read PPT Question Text
- Automatically Clear Response
- Enable Toolbar Mode
- Use System Language
- Language: [en - English (US, American)] [Set To Default]
- [OK] [Cancel]

# More vClicker Settings

**About vClicker** *About* displays software version and contact information.

**Small, Medium, Large** You can change the size of the vClicker window and buttons from the default *Small* size to *Medium*, or to *Large*.

**Buttons, Question** By default, the button keys display in the Upper Pane of the vClicker window and a snapshot of the question displays in the Lower Pane. The check mark indicates these view menu options are turned on. You can turn off either or both of these views from this menu.

## PREFERENCES

- **Enable Text-To-Speech**
- **Enable High-contrast Buttons**
- **Enable Read PPT Question Text**

# Using vClicker

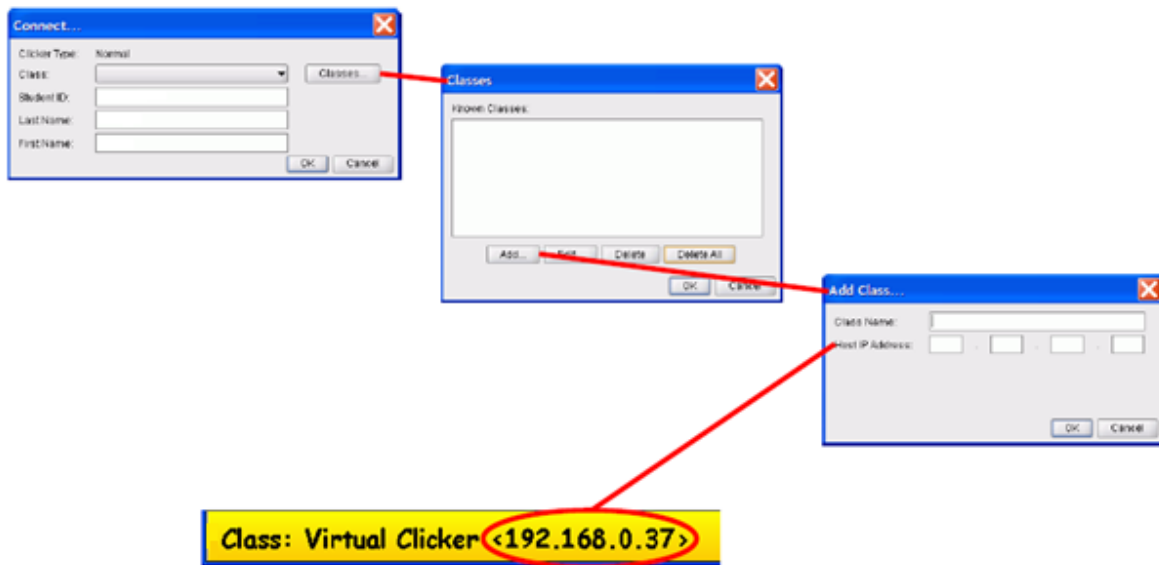
Before you can connect to the Class, your instructor has to *Enable vClicker Support* in the Response software (a **Setup My Hardware** option). This ensures that the **Host IP Address**, which your vClicker needs to use to connect, will be published every time a Class is started.

When your instructor starts a Class, you will *connect* to it.

In most circumstances, a Class will always use the same **Host IP Address**. When you connect to it, you will be prompted to identify the name of the Class and its Host IP Address. If the Host IP Address changes or you use vClicker in more than one Class, you can add the Class Name and its current Host IP Address to a list from which it can then be selected when the Class has been started and you are ready to connect to it.

# Connecting to a Class

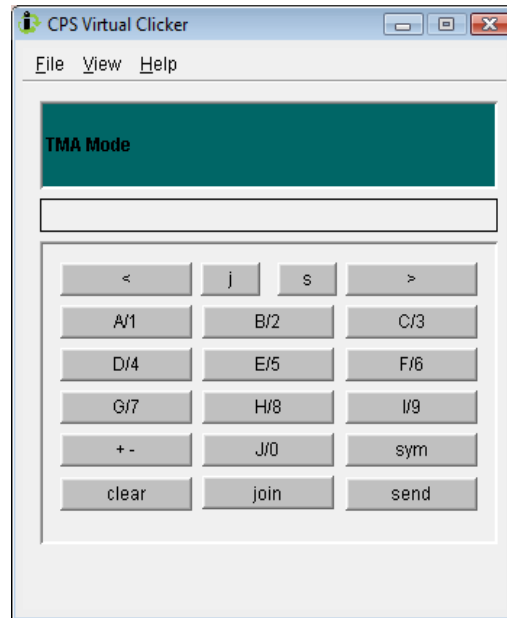
1. When the Class has been started, start up vClicker.
2. Click on the **Connect** button.
3. The first time you connect to Response, you will enter your **Student ID** in the **Connect** dialog.



4. Click on the **Classes** button. Click on the **Add** button. Enter the **Class Name** and **Host IP Address** shown on the Status Bar.
5. This information is retained, making subsequent connections easy – just click on the **Connect** button, then click on the **OK** button to process the connection to the Class.
6. When the Class is ended, click on the **Disconnect** button.

# Inputting and Sending Answers

You have the choice of clicking on the Input Keys on the vClicker dialog, or using your computer keyboard when you are entering answers to Questions during a Session. Regardless of which input method you use, each keystroke will display on the vClicker Display. Click Send to send your answer in the same way you would with a hardware clicker.



## How do I contact eInstruction for more help?

For technical assistance you can reach eInstruction CPS Technical Support at [www.einstruction.com/support](http://www.einstruction.com/support) or by calling 1-888-333-4988.

For general contact information, please see [www.einstruction.com/contact](http://www.einstruction.com/contact).





eInstruction™

**Corporate Headquarters**

308 N Carroll Blvd  
Denton, TX 76201  
USA

TEL: 888.707.6819  
FAX: 940.565.0959

8224 East Evans Road  
Scottsdale, AZ 85260  
USA

TEL: 480.948.6540  
SUPPORT: 480.443.2214  
FAX: 480.948.5508

**European Headquarters**

Centre Education Europe  
26/36 rue Alfred Nobel  
93600 Aulnay Sous Bois  
France

TEL: +33 1.58.31.10.60  
FAX: +33 1.58.31.10.69  
[www.interwritelearning.fr](http://www.interwritelearning.fr)

[www.interwritelearning.com/support](http://www.interwritelearning.com/support)

Support: 480.443.2214

Copyright© 2008 eInstruction

Interwrite is a registered trademark of eInstruction, Inc.

All other products and company names are the trademarks  
or registered trademarks of their respective owners.

The information contained in this document is subject to change without notice. eInstruction assumes no responsibility for technical, or editorial errors, or omissions that may appear in this document, or for the use of this material. Nor does eInstruction make any commitment to update the information contained in this document. This document contains proprietary information which is protected by copyright. All rights reserved. No part of this document can be photocopied or reproduced in any form without the prior, written consent of eInstruction.